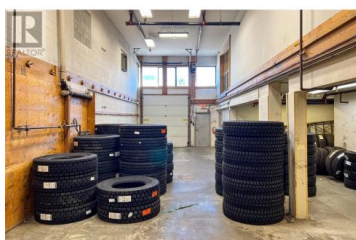
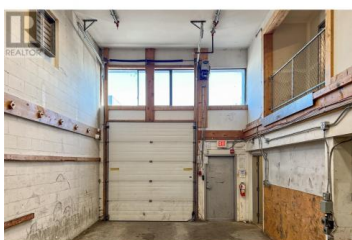
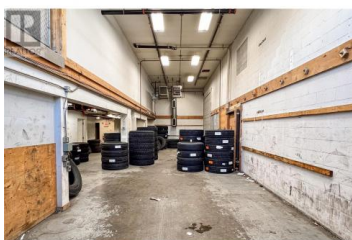


## 1060 Leathead Road 10 Kelowna British Columbia

Rutland North

**\$14**



Office space(1905 sqft) / Showroom (1800 sqft) Mechanical Space- includes 978 sqft of Mezzanine (3035 sqft) plus tn. \$4.25. Multi-Use Industrial Building with Office, Showroom, and Mechanical Area in Kelowna. This remarkable property offers a versatile space designed to meet the needs of a variety of businesses. Situated in the industrial hub of Kelowna, this multi-use building provides a perfect blend of functionality, safety, and convenience. Key Features: 1. Office Space: The building includes well-designed area that could be remodelled for a professional environment for administrative tasks, meetings, and collaboration(Roughed in bathroom). 2. Showroom: A dedicated showroom area allows businesses to showcase their products or services, creating an inviting space for clients and customers (Roughed in Bathroom). 3. Mechanical Area: With a designated mechanical area, this property is ideal for businesses requiring equipment storage, maintenance, or repair facilities. 4. FULL FIRE SUPPRESSION. Location: Strategically located in Kelowna's industrial zone, this property offers easy access to major transportation routes, making it convenient for both suppliers and customers. The surrounding area is home to a thriving business community, providing a conducive environment for growth and collaboration. (id:6769)



RE/MAX Kelowna  
100-1553 Harvey Avenue  
Kelowna, BC,  
Canada

### Paul Mondoux

Royal LePage Kelowna

Phone: (250) 859-2449

<http://www.teammondoux.com/>

