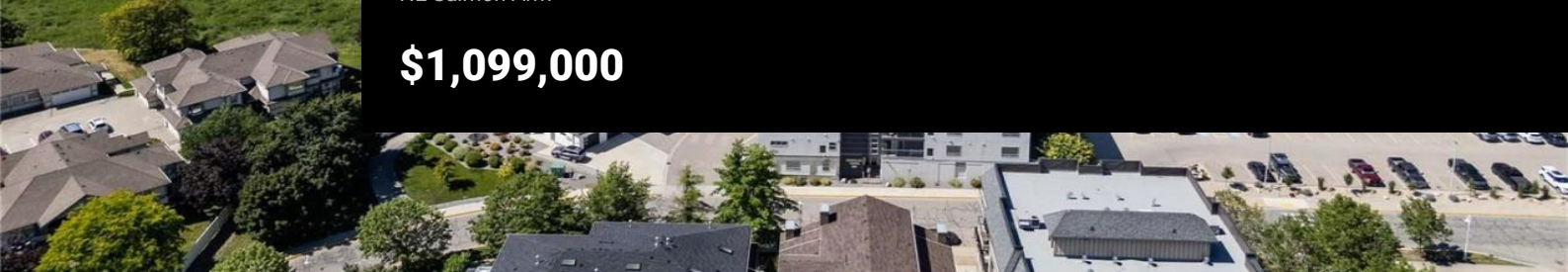




121 Harbourfront Drive 10 Salmon Arm British Columbia

NE Salmon Arm

\$1,099,000



Welcome to this beautifully designed lakeside townhome, built in 2018 and one of just six exclusive upper-level units in a quiet, sought-after complex. Enjoy sweeping, unobstructed views of the lake and mountains from nearly every room in this bright and airy home. Step into the open-concept living space filled with natural light and upscale finishes throughout. The chef's kitchen features quartz countertops, a gas range, pantry, and a built-in coffee station—perfect for entertaining or everyday comfort. The spacious primary suite includes a walk-through closet and a spa-inspired ensuite with a sleek, curb-less walk-in shower. A second bedroom offers flexibility for guests or a home office, with a full bathroom just steps away. You'll appreciate the dedicated laundry room with bonus storage, plus both a large front deck with an electric awning and a covered back deck with privacy screens—ideal for relaxing or taking in the ever-changing lake views. Other standout features include a cozy gas fireplace, elevator access, natural gas BBQ hookup, a single garage with storage, and two additional parking spots right out front. Built with quality 2x8 construction, this home is as solid as it is stylish. Watch eagles soar and swans glide from the comfort of your living room in this low-maintenance, turn-key lakeside retreat—truly a rare offering. (id:6769)



RE/MAX Kelowna
100-1553 Harvey Avenue
Kelowna, BC,
Canada

Doris Mills

RE/MAX Shuswap Realty

Phone: (250) 833-8573

<http://dorismills.com/>

