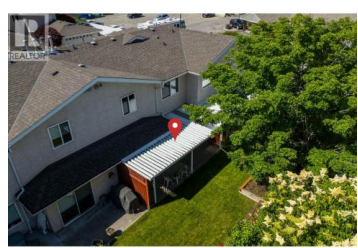




**1800 Parkview Crescent 10 Kelowna British Columbia**  
 Springfield/Spall  
**\$525,000**



OPEN HOUSE SUNDAY JUNE 7th, 1PM-3PM. Welcome to The Maples -- a quiet, established 55+ community of just 14 self-managed units, tucked into one of Kelowna's most convenient central neighbourhoods. This two-level townhome offers a thoughtful layout with comfort and easy living in mind. At nearly 1,600 sq. ft., the main floor features a bright white kitchen with breakfast nook, plus separate dining room and living room with cozy gas fireplace. Laminate flooring flows through the living and dining areas, and a convenient 2-piece powder room completes the main level. Step outside to your large covered back patio -- a private retreat overlooking green space with garden beds. Upstairs, you'll find all three bedrooms including primary with ensuite, full main bathroom, and a bright laundry room with soaring windows -- a rare and welcome feature that makes everyday tasks a pleasure. Single-car garage plus one additional exterior parking rounds out the practical features of this home. The Maples is pet-friendly (one dog no taller than 15" at the shoulder and/or one cat welcome) with low strata fee of \$381.82/month. And the location truly delivers -- walk to Orchard Park Mall, Costco, Superstore, and the Mission Creek Greenway right from your door. Click the 3D Tour Link to view all photos, plus downloadable floorplans and 3D walkthrough. (id:6769)



**RE/MAX Kelowna**  
 100-1553 Harvey Avenue  
 Kelowna, BC,  
 Canada

**Jaime Briggs**

Coldwell Banker Horizon Realty

Phone: (250) 215-0015

<https://briggsonhomes.com/about-us/>

