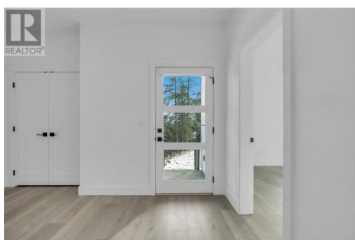




2835 Canyon Crest Drive 10 West Kelowna British Columbia

Shannon Lake

\$769,900



RARE, BRAND NEW, MOVE-IN READY 2-Bed + Flex, 2 Bathroom walkout rancher at Edge View in Tallus Ridge. This is the ONLY Frontier Home Plan REMAINING. Unique, versatile design is perfect for rightsizing. With more space than a condo, and flexible room spaces, this home has all the space you need, with the added benefits of townhome living. The main floor includes a large foyer, a bedroom, a full bathroom, a spacious living/dining area, and a spacious kitchen with island, gas stove and plenty of cupboard and counter space. Step out to the expansive deck and take in the views of Shannon Lake. Downstairs, retreat to your primary suite, also enjoying the lake views, plus large walk-in closet with laundry, and 5-piece ensuite with soaker tub and separate shower. A rec room, additional flex/bedroom/office space, plenty of storage, and a large patio complete this level. With a single car garage, drive way, and a backyard, add further appeal. Located in sought-after Tallus Ridge, you're a stroll away from the golf course, Shannon Lake, and walking/hiking trails. Plus, the best of West Kelowna (shopping, dining, the new Library, Johnson Bentley pool, beaches) are nearby. Don't miss out on this one-of-a-kind opportunity. Showhome Open Sat & Sun 12-3pm (id:6769)

Darcy Nyrose

RE/MAX Kelowna

Phone: (250) 575-1946

<http://www.kelownarealestatepros.com/>



RE/MAX Kelowna
100-1553 Harvey Avenue
Kelowna, BC,
Canada

