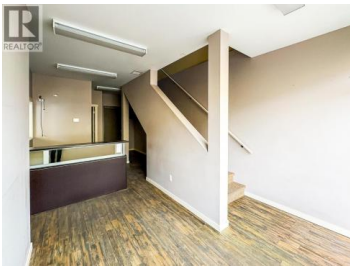
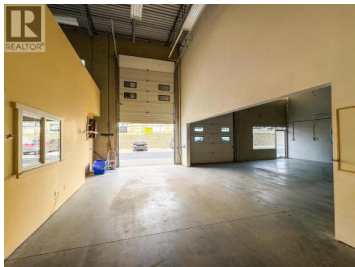




3306 Appaloosa Road 10 Kelowna British Columbia
 North Glenmore
\$380,000



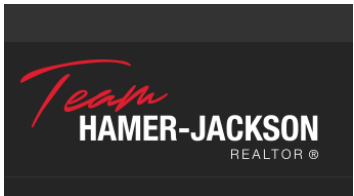
Located in Mill Creek Industrial Park - Unit #10 at 3306 Appaloosa Road features 945 SF of industrial space with one (1) 12'x12' overhead door, 3 designated parking stalls and 125AMP Phase-1 power along with value-added mezzanine and other improvements throughout the unit. This property benefits from excellent accessibility, strong signage exposure and proximity to a wide-range of other industrial users within the complex. The space is vacant and can be sold together with Unit #9 for a total of 1,890 SF. Please contact the listing agents for more information and to arrange a showing. (id:6769)



Christopher Wills

Venture Realty Corp.

Phone: (250) 870-1330
<https://venturecommercial.ca/>



RE/MAX Kelowna
 100-1553 Harvey Avenue
 Kelowna, BC,
 Canada