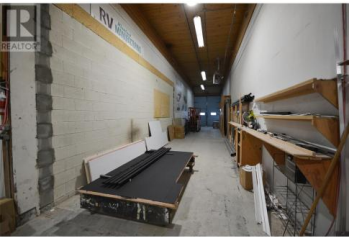


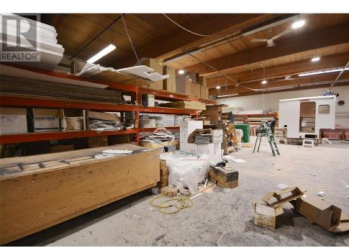
1219 Commercial Way 100 Penticton British Columbia

Industrial Area

\$14



5000 sqft space with 16'6" ceiling height, 14' to the bottom of the beams and access through an 11'8" overhead door. Also includes 15x18' office with 2 storage rooms and mezzanine above. Common washrooms accessible to neighbouring unit. Plenty of parking plus approximately 1000 sqft of yard space in front of unit 100 available at \$3 per square foot. Lease is a 3-year term with option to renew, price plus triple net. (id:6769)

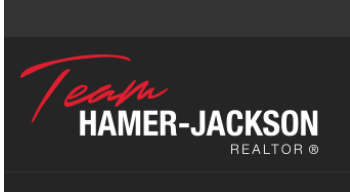


Jesse Chapman

Royal LePage Locations West

Phone: (250) 490-6178

<https://teamchapman.ca/>



RE/MAX Kelowna
100-1553 Harvey Avenue
Kelowna, BC,
Canada