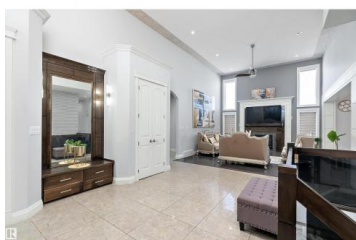
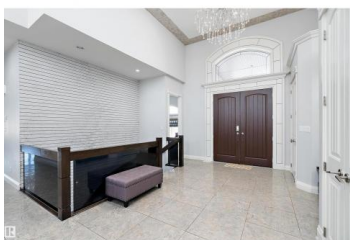




## Rural Leduc County Alberta

Rock Crest Estates

**\$1,350,000**



Fabulous ROCK CREST just minutes to everything & on the BEAUMONT SCHOOL SYSTEM! This fully developed WALK OUT BUNGALOW on 2.99 ACRES offers over 6000 sq. ft. of LIVING AREA, a 5 CAR GARAGE & with 6 bedrooms, plus 5 BATHS & CENTRAL AIR, it's a perfect family home! New 6000 sq. ft. CONCRETE DRIVE with GATE & FENCED YARD, The foyer leads to a lovely FORMAL LIVING & DINING ROOMS with soaring ceilings, HARDWOOD floors, FIREPLACE, COFFERED CEILINGS & PATIO DOORS provides access to the LARGE DECK that overlooks the yard. DEN/BED with BI CABINETS off the foyer, a 2nd. BED with ENSUITE, laundry room & garage access on the main. The ISLAND KITCHEN features TWO TONE CABINETS with rich GRANITE & STAINLESS APPLIANCES, a generous DINING AREA, FIREPLACE & SUNLIT FAMILY ROOM with BI MEDIA CENTER. The primary features TRAY CEILINGS, WALK IN closet, a SPA ENSUITE with shower, JETTED TUB & MAKE UP VANITY. The lower level has new LVP FLOORING, a GAMES ROOM, BI HOME THEATRE, STEAM ROOM, WET BAR, 3 beds & 2 full baths. WOW! (id:6769)

**Mona C. LaHaie**

RE/MAX Elite

Phone: (780) 850-0800

<http://www.horsepowerranch.com/>



**RE/MAX Kelowna**  
100-1553 Harvey Avenue  
Kelowna, BC,  
Canada