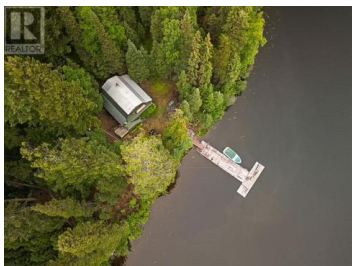




100 PAPPERT Island Prince George British Columbia
\$349,900



Once you get to 100 Pappert Island you'll never want to leave. The Ultimate retreat approx 30 min north of the Hart Hwy, this special piece of paradise is situated on a gorgeous 21,344 sq ft lot with approx. 144 ft of lake shore & a very short boat ride from the private, secure boat launch & parking for island owners only. This very well built cabin was constructed in 1997 and is fully insulated for all seasons & wired for generator power & features a 528 sqft open concept great room, fully equipped kitchen with stove & fridge, 432sqft second floor loft that comfortably sleeps 8, upper & lower decks with stunning views, fire pit, wood heated hot tub, large storage shed, outhouse, HWT on demand shower, large dock. (id:6769)

Dean Coleman

Royal LePage Aspire Realty

Phone: (250) 565-5452

<http://www.deancoleman.ca/>



RE/MAX Kelowna
 100-1553 Harvey Avenue
 Kelowna, BC,
 Canada