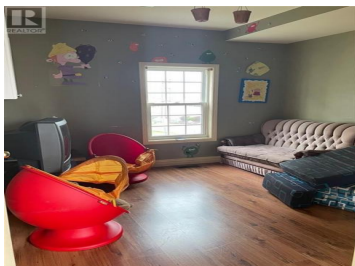
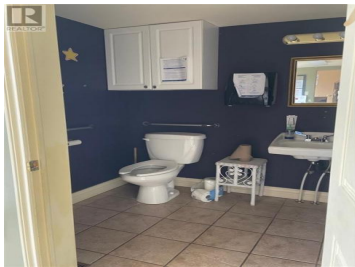




Dieppe New Brunswick
\$449,000

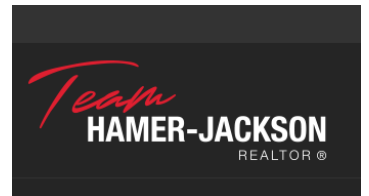
Formerly used as a day care with an abundance of parking, wheelchair accessibility, and many internal arrangement options at your disposal, this building and lot provides near endless options. Previous uses also include it being used as an office building. It is located within short walking distance to all the multiple restaurants, entertainment and retail establishments that Dieppe has to offer. This is the perfect location for your business. (id:6769)



Chris MacDonald

RE/MAX Quality Real Estate Inc.

Phone: (506) 229-5045





RE/MAX Kelowna
100-1553 Harvey Avenue
Kelowna, BC,
Canada