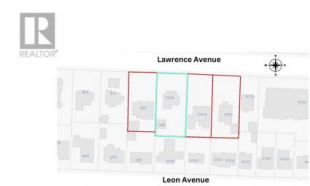




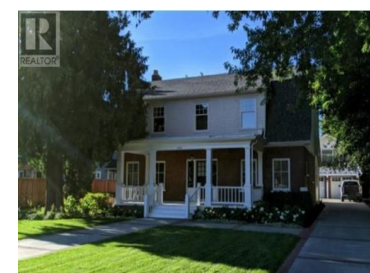
1001 Lawrence Avenue Kelowna British Columbia

Kelowna North

\$2,836,000



300 FOOT WIDE ASSEMBLY. Unlock Unmatched Potential: Prime LAND ASSEMBLY for Premium Development! This 4-lot assembly on Lawrence Avenue, just across from the Mediterranean Market, spans 1-ACRE+ and is listed for \$13,312,000. It is currently zoned MF1, with the potential to re-zone. This could allow options for a multi-family residential building with commercial space on the ground floor. Situated in a highly sought-after central downtown area, close to Capri Mall, and located in a quiet residential neighborhood, this property offers excellent accessibility to key amenities, making it a premium development prospect. Note: This assembly to be purchased along with the other properties in the land assembly, which include 1009 Lawrence Avenue, 1023 Lawrence Avenue, and 987 Lawrence Avenue. (id:6769)



Todd Karaim

Royal LePage Kelowna

Phone: (778) 215-0288



RE/MAX Kelowna
100-1553 Harvey Avenue
Kelowna, BC,
Canada

