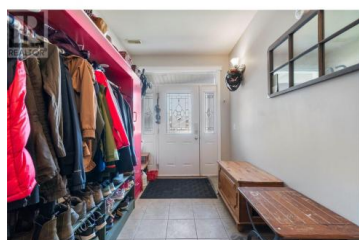
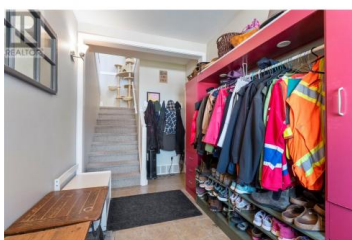




1002 14 Avenue Salmon Arm British Columbia

SE Salmon Arm

\$745,000



Welcome to 1002 14 Ave SE in the Orchard Ridge subdivision of Salmon Arm! This spacious 5 bed, 2.5 bath home offers over 2,300 sq ft of well-designed living space. The upper level main home features 3 bedrooms and 2.5 baths with vaulted ceilings, large windows, and an abundance of natural light. A large deck located off of the dining area provides ample space to relax and enjoy the Shuswap weather while BBQ'ing dinner for the family. The primary bedroom includes a large walk-in closet and spacious shared ensuite with jetted tub and separate shower. Downstairs, a bright and thoughtfully laid out in-law suite with separate laundry offers flexibility. Rented as a 1 Bed, a flex room currently used as a home office, has locking doors on either side to easily convert back to a full 2 Bed in-law suite. With a separate entrance, its own patio, and a new fridge (2025), it's ideal for extended family or as mortgage helper. Energy efficiency upgrades in 2022 include a new heat pump and on-demand hot water tank. The main kitchen boasts a new fridge and stove (2023). Enjoy mountain views of Mt. Ida from the fully fenced backyard, complete with a garden shed for extra storage. Situated in the highly sought-after Hillcrest Elementary catchment area, this home checks all the boxes for families and investors alike! 3D Tour, Video, And Floorplans available. (id:6769)

Jodi Towell

Fair Realty (Salmon Arm)

Phone: (250) 463-1734

<http://www.shuswaphouses.ca/>



RE/MAX Kelowna
100-1553 Harvey Avenue
Kelowna, BC,
Canada

