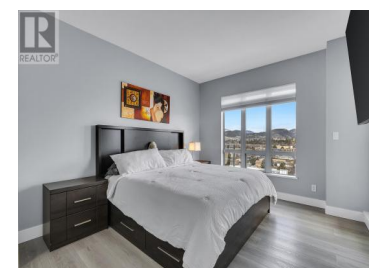




2040 Springfield Road 1006 Kelowna British Columbia

Springfield/Spall

\$765,000



INVUE represents contemporary architectural excellence in Kelowna. This distinguished 14-story development features 92 luxury condominiums with a sophisticated concrete exterior characterized by striking angular elements and expansive glazing. The tower's modern design integrates with a commercial podium base. Residences showcase crafted interiors with unobstructed mountain and city views. Amenities include meeting facilities, a rooftop lounge with pool and hot tub, fitness center, sauna and steam room, and guest accommodations. Connectivity via Springfield Road and Highway 97, provides easy access to downtown, UBC Okanagan campus, and Kelowna International Airport, with nearby retail destinations including Orchard Plaza and Orchard Park Shopping Centre. FULLY RENOVATED IN 2024, this 10th-floor corner residence exemplifies premier urban living with panoramic vistas. Features include elevated ceilings, floor-to-ceiling windows, and natural light. The open-concept area encompasses a chef-inspired kitchen with island, recessed lighting, pantry, and dining area. The living room flows to an expansive balcony. The primary suite features dual closets, a five-piece ensuite with double vanities, and a second, private balcony. The main bathroom includes a walk-in shower with white tile. RENOVATION HIGHLIGHTS: New engineered hardwood flooring, renovated bathrooms, new kitchen with addi...



RE/MAX Kelowna
100-1553 Harvey Avenue
Kelowna, BC,
Canada

Richard Taylor

Engel & Volkers Okanagan

Phone: (250) 864-9476

