

## 11610 Victoria Road 101 Summerland British Columbia

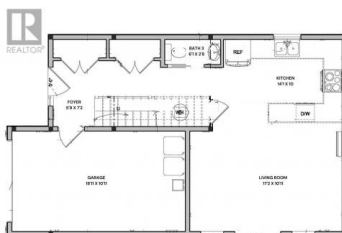
Main Town

**\$649,900**

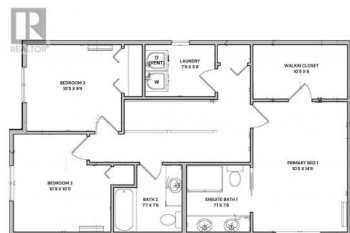
### SOUTHWEST CORNER



11612 VICTORIA ROAD S. - LANDSCAPE PLAN



MAIN FLOOR PLAN



ABOVE FLOOR PLAN



PHOTO REFERENCE FROM 8108 PURVES ROAD TO SHOW BUILDER QUALITY



PHOTO REFERENCE FROM 8108 PURVES ROAD TO SHOW BUILDER QUALITY



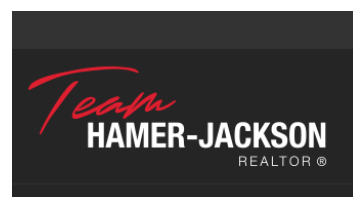
PHOTO REFERENCE FROM 8108 PURVES ROAD TO SHOW BUILDER QUALITY

Brand new half duplex near Giants Head Elementary in Summerland! Two storey, 1324 sqft, 3 bed, 3 bath home. Best part is no strata fees and no restrictions! Main floor with open concept living room to kitchen with all new appliances and a 2pc bath. Efficient ductless heat pumps provide the heating and air conditioning allowing clean lines in the unit and no drops in the ceiling, plus an HRV unit to help increase energy efficiency. Upstairs you will find your primary bedroom with large walk-in closet and 4pc ensuite, 2 bedrooms, another 4pc bath & separate laundry room! Private fenced yard with patio, 200 amp service, single car garage roughed in for an EV charger with additional parking stall. Take comfort in with the protection of the 2/5/10 new home warranty. Near Dale Meadows sports fields, close to Giants Head Mountain Park, and a short distance to all downtown Summerland has to offer! Property is currently under construction with estimated completion early 2025. . Contact the listing agent to learn more! (id:6769)

#### Wes Stewart

Royal LePage Locations West

Phone: (250) 486-2794



**RE/MAX Kelowna**  
 100-1553 Harvey Avenue  
 Kelowna, BC,  
 Canada