

1751 Harvey Avenue 101 Kelowna British Columbia

Springfield/Spall

\$21



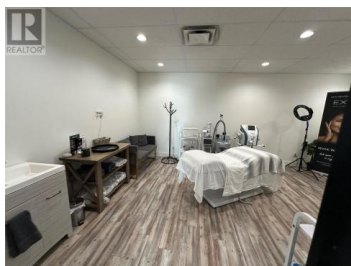
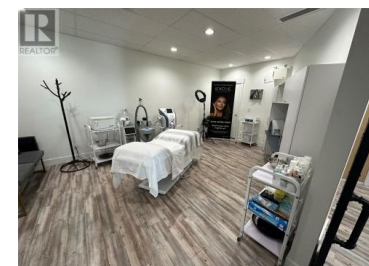
858 Sq. Ft. mixed-use (Office/ retail) space and 180 Sq. Ft. common area with kitchen and two shared bathroom is available in the Landmark district area and comes with 2 parking stall. The building is occupied by professional tenants in a very high-traffic area and exposure. Central location with easy access to Highway 97 and Springfield Rd. Available immediately. Triple Net includes cost of power and gas. (id:6769)



Gary Judge

Realtymonx

Phone: (250) 899-3101



RE/MAX Kelowna
100-1553 Harvey Avenue
Kelowna, BC,
Canada