

## 2110 Hoy Street 101 Kelowna British Columbia

Springfield/Spall

# \$329,900



Don't miss out on this spacious 2 bed / 2 bath corner unit with a large wrap-around enclosed balcony with North Easterly exposure. This quiet 55+ retirement community is just a short walk to all amenities, including Capri Mall, doctor's offices, grocery/pharmacies, transit and all the amenities Kelowna offers. Springfield Manor is a great community, with a first-floor games room featuring card tables, a pool table, exercise equipment, plus a workshop loaded with tools and supplies. Two storage lockers and one underground parking stall are included. This incredible community also offers seasonal garden plots. (id:6769)

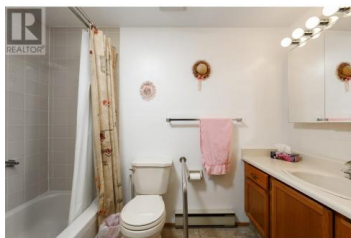
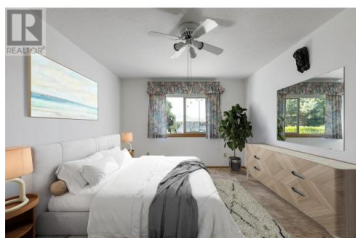


### Derek Martin

RE/MAX Kelowna

Phone: (250) 878-1555

<http://www.martinhomes.ca/>



RE/MAX Kelowna  
100-1553 Harvey Avenue  
Kelowna, BC,  
Canada