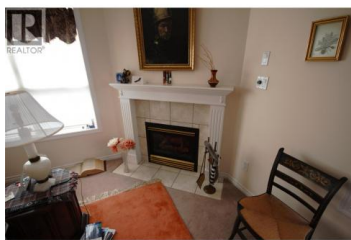


2275 ATKINSON Street 101 Penticton British Columbia

Main South

\$465,000



Welcome to Hyde Park at Cherry Lane Towers! This bright and beautifully laid out 2-bedroom, 2-bathroom 1st-floor home offers comfortable and convenient living in one of Penticton's most sought-after condo communities. Unit 101 features 9 foot ceilings, a spacious open-concept floor plan filled with natural light, with both south and west-facing balconies providing the perfect spaces to enjoy sunny afternoons and evening sunsets. The generous living room with gas fireplace and dining area flow seamlessly into the kitchen, creating an ideal setup for entertaining or everyday living. The primary bedroom includes a full ensuite bath, walk in closet and access to the west patio, while the second bedroom and bathroom offer excellent flexibility for guests, hobbies, or a home office. Enjoy the convenience of in-suite laundry, abundant storage, and easy 1st-floor access to a recreation room for the complex which boasts a library, exercise space and an entertaining room. Cherry Lane Towers is a well-maintained concrete and steel building known for its quiet atmosphere and unbeatable location just steps to Cherry Lane Shopping Centre, transit, restaurants, medical services, and more. A fantastic opportunity to enjoy low-maintenance living in the heart of Penticton, waiting for you to bring your personal touches. For more information or to book a private showing reach out today. (id:6769)



RE/MAX Kelowna
 100-1553 Harvey Avenue
 Kelowna, BC,
 Canada

Cameron Quinn

RE/MAX Wine Capital Realty

Phone: (250) 274-0100

