



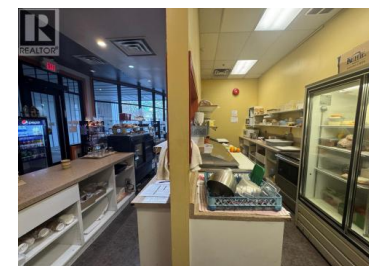
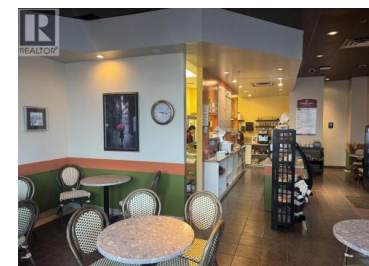
bert first  
anonymous



## 2365 Gordon Drive 101 Kelowna British Columbia

Lower Mission

# \$75,000



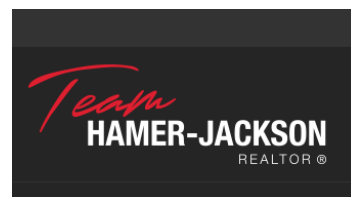
Thriving artisan bakery cafe located in the highly sought-after Guisachan Village in Kelowna. Fezziwig's Artisan Bakery Cafe is a well-loved neighborhood destination known for its handcrafted baked goods, inviting ambiance, and loyal customer base. This turnkey business offers approximately 890 sq.ft. of efficiently utilized space with strong foot traffic and excellent visibility within a busy residential and commercial hub. Favorable lease in place with base rent of approximately \$1,557/month + GST for the first term and \$1,595/month + GST in later years. Ideal for owner-operators or experienced cafe entrepreneurs looking to acquire an established brand with consistent sales and growth potential or bring your own brand. Rare opportunity to step into a proven concept in one of Kelowna's most desirable neighborhoods. (id:6769)

### Jean Seguin

RE/MAX Real Estate Services

Phone: (778) 785-2135

<http://restaurantbusinessbroker.ca/>



RE/MAX Kelowna  
100-1553 Harvey Avenue  
Kelowna, BC,  
Canada