



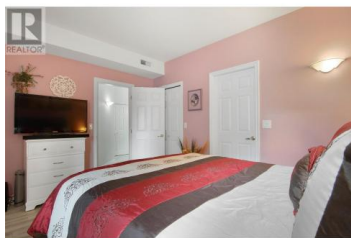
2388 Baron Road 101 Kelowna British Columbia

Springfield/Spall

\$499,000



Elegantly Designed Ground Floor Corner Unit in the Heart of Kelowna Discover unparalleled privacy in this ground floor corner unit, ideally situated in one of Kelowna's most desirable and well-managed strata buildings. This home features a generous 250 square foot patio. Inside, the unit has new flooring throughout. Modern and bright. A Spacious layout with two bedrooms and two bathrooms and nine-foot ceilings. The primary suite is complete with an oversized walk-in closet and an ensuite. Live a short walk from the Mission Greenway, Orchard Park Mall, Okanagan Rail Trail, and Superstore, placing the best of Kelowna at your doorstep. This is central living in a quiet, secure setting. This property is an exceptional choice for those who value privacy, comfort, and accessibility. (id:6769)



Andrew Smith

Royal LePage Kelowna

Phone: (250) 979-8066

<http://www.okanaganbc.com/>



RE/MAX Kelowna
100-1553 Harvey Avenue
Kelowna, BC,
Canada