

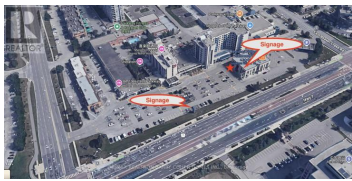
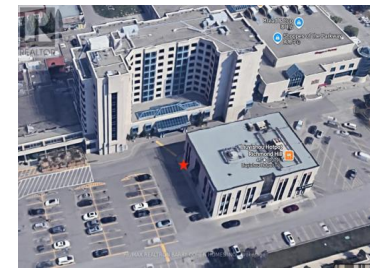


650 Highway 7 101 Richmond Hill Beaver Creek Business Park Ontario

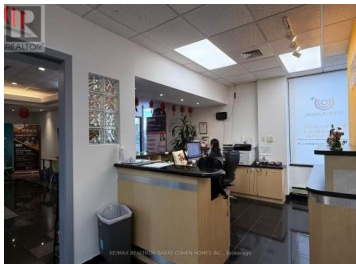
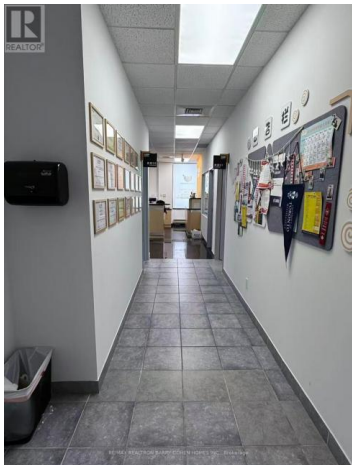
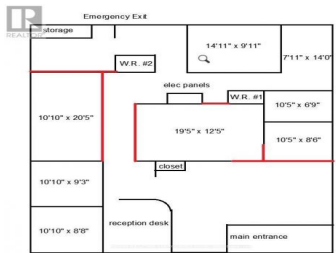
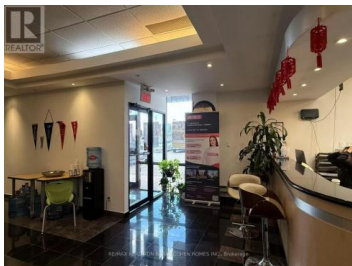
Beaver Creek Business Park

\$28

RE/MAX REALTRON BARRY COHEN HOMES INC., Brokerage



Location! Location! Location! Prime ground-floor corner office unit with exceptional exposure at the high-traffic intersection of Highway 7 and Leslie Street. Building signage available for maximum visibility. Ideal for a wide range of professional and commercial uses, including medical, dental, law firm, insurance, spa, accounting, consulting, and general office use. Conveniently located with ample parking and easy access to major highways, public transit, and surrounding amenities. An outstanding opportunity to establish or expand your business in one of the area's most sought-after commercial locations. (id:6769)

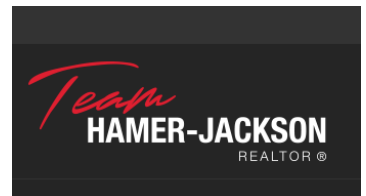


SIMONE CHEN

RE/MAX REALTRON BARRY COHEN HOMES INC.

Phone: (647) 871-1182

<https://www.houses-toronto.ca/>





RE/MAX Kelowna
100-1553 Harvey Avenue
Kelowna, BC,
Canada