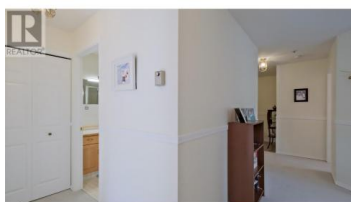




920 ARGYLE Street 101 Penticton British Columbia

Main North

\$338,000



Welcome to Wedgewood Manor, a well constructed building by Starline Enterprizes. Spacious 2 bedroom, 2 bathroom corner unit (north east facing) with the largest floor plan in the building. The home has newer flooring, a gas fireplace & in suite laundry. The building has a rooftop patio for you to use at your leisure to enjoy the summer days and beautiful sunsets. Very well managed strata, secured parking, secured storage and close to shopping & public transit. (id:6769)

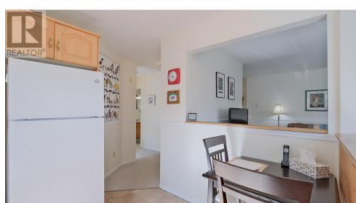


Steve Thompson

Chamberlain Property Group

Phone: (250) 487-7000

<http://www.teamthompson.com/>



RE/MAX Kelowna
100-1553 Harvey Avenue
Kelowna, BC,
Canada