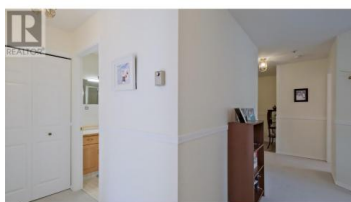




920 ARGYLE Street 101 Penticton British Columbia

Main North

\$325,000



Welcome to Wedgewood Manor, a well built building by Starline Enterprises. This spacious 2-bedroom, 2-bathroom corner unit (facing northeast) offers the largest floor plan in the building. Enjoy newer flooring, a cozy gas fireplace, and the convenience of in-suite laundry. The building features a rooftop patio, perfect for relaxing on sunny days or watching sunsets. The strata is well-managed, with secure parking, secure storage, and easy access to shopping and public transit. A bonus feature: your strata fees include gas! (id:6769)



Steve Thompson

Chamberlain Property Group

Phone: (250) 487-7000

<http://www.teamthompson.com/>



RE/MAX Kelowna
100-1553 Harvey Avenue
Kelowna, BC,
Canada