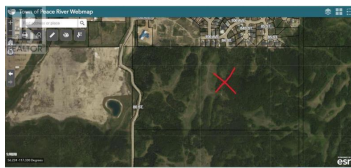
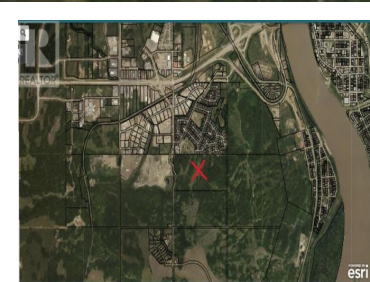


10101 68 Street Peace River Alberta

Saddleback Ridge

\$1,200,000



Located directly adjacent to Saddleback Ridge, this 78.72 acre parcel of land is destined to become part of any future development in the Town of Peace River. Develop this into a new residential subdivision but take advantage of the close proximity to all of the retail locations already located on the West Hill. Future commercial development is also likely to continue on the West Hill making this a great parcel of land to buy and develop. Call today to find out more. (id:6769)



RE/MAX Kelowna
 100-1553 Harvey Avenue
 Kelowna, BC,
 Canada

Layne Gardner

RE/MAX Northern Realty

Phone: (780) 618-7642

<https://www.laynegardner.com/>

