



11610 Victoria Road 102 Summerland British Columbia

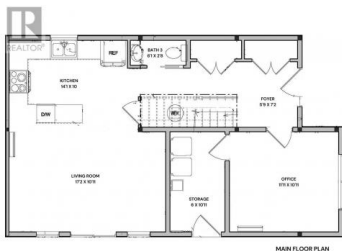
Main Town

\$699,900

NORTHWEST CORNER



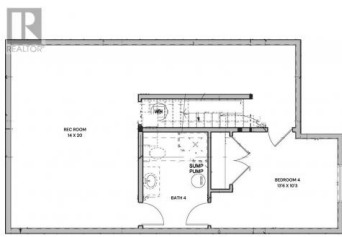
11612 VICTORIA ROAD S. - LANDSCAPE PLAN



MAIN FLOOR PLAN



ABOVE FLOOR PLAN



BASEMENT FLOOR PLAN

Brand new half duplex near Giants Head Elementary in Summerland! Two storey, 2297 sqft, 4 bed, 3 and 1/2 bath home. Best part is no strata fees and no restrictions! Main floor with open concept living room to kitchen with all new appliances, a 2pc bath, storage room plus a flex room - use as 5th bedroom, rec room or office space! Upstairs you will find your primary bedroom with large walk-in closet and 4pc ensuite, 2 bedrooms, another 4pc bath & separate laundry room! Private fenced yard with patio and 2 off street parking stalls. Efficient ductless heat pumps provide the heating and air conditioning allowing clean lines in the unit and no drops in the ceiling, plus an HRV unit to help increase energy efficiency. 200 amp electrical service, roughed in for an EV charger and prewired for a home theater in the lower level rec room. Take comfort in with the protection of the 2/5/10 new home warranty. Near Dale Meadows sports fields, close to Giants Head Mountain Park, and a short distance to all downtown Summerland has to offer! Property is currently under construction with estimated completion early 2025. Contact listing agent for more! (id:6769)



PHOTO REFERENCE FROM 818 PURVES ROAD TO SHOW BUILDER QUALITY



PHOTO REFERENCE FROM 818 PURVES ROAD TO SHOW BUILDER QUALITY

Wes Stewart

Royal LePage Locations West

Phone: (250) 486-2794



RE/MAX Kelowna
 100-1553 Harvey Avenue
 Kelowna, BC,
 Canada

