



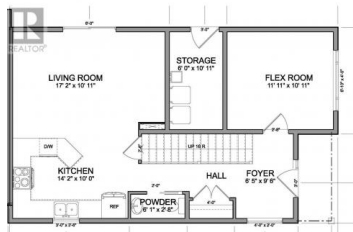
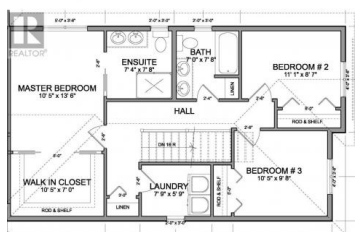
**11612 Victoria Road 102 Summerland British Columbia**

Main Town

**\$729,000**

### EAST ELEVATION

SCALE: 1/4" = 1'-0"



**RE/MAX Kelowna**  
100-1553 Harvey Avenue  
Kelowna, BC,  
Canada

Brand new half duplex near Elementary & High Schools in Summerland! Two storey, 2,297sqft, 4 bed, 4 bath home. Best part is no strata fees and no restrictions! Main floor with open concept living room to kitchen with upgraded s/s appliance package, a 2pc bath, storage room plus a flex room - use as 4th bedroom, rec room or office space! Upstairs you will find your primary bedroom with large walk-in closer and 4pc ensuite, 2 bedrooms, another 4pc bath & full laundry room! Private fenced yard with patio and 2 off street parking stalls. Near Dale Meadows sports fields, close to Giants Head Mountain Park, and a short distance to all downtown Summerland has to offer! Take comfort in with the protection of the 2/5/10 new home warranty. Seller will look to take property in trade as part payment. Contact listing agent for more! (id:6769)

**Wes Stewart**

Royal LePage Locations West

Phone: (250) 486-2794

