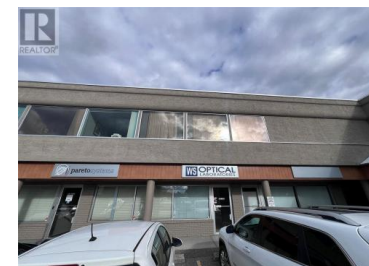




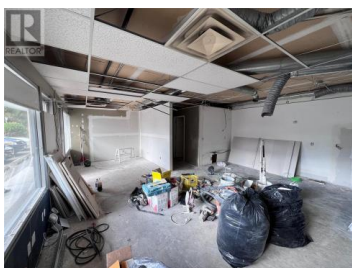
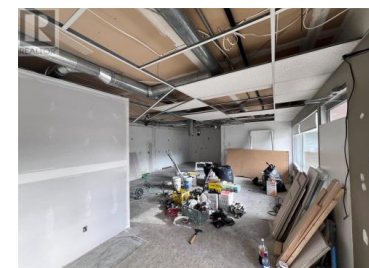
1593 Sutherland Avenue 102 Kelowna British Columbia

Springfield/Spall

\$25



Opportunity to lease ground floor unit at Sutherland Place. Located near the Landmark District and just off Highway 97, Unit 102 at 1593 Sutherland Avenue offers 665 square feet of open space, ready for tenant improvements. The property is easily accessible off Sutherland Avenue and features plenty of customer parking and signage opportunities. Zoned UC2, allowing for a variety of retail, office and service uses. Please contact listing agent for more information. (id:6769)

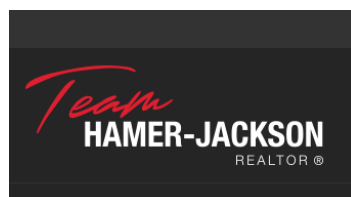


Christopher Wills

Venture Realty Corp.

Phone: (250) 870-1330

<https://venturecommercial.ca/>



RE/MAX Kelowna
100-1553 Harvey Avenue
Kelowna, BC,
Canada