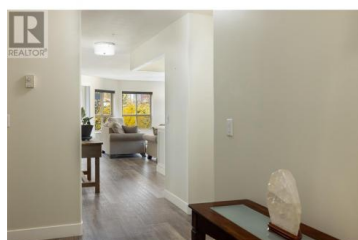




2130 Vasile Road 102 Kelowna British Columbia

Springfield/Spall

\$485,000



Your Perfect Corner of Comfort and Convenience - Welcome to Orchard Estates! Nestled in the heart of the city, this bottom-floor, updated corner condo is the perfect blend of spacious living and modern convenience. With 2 bedrooms, 2 bathrooms, and roughly 1,200 square feet of bright, open-concept design, this home invites you to relax and enjoy every moment. Step inside to discover fresh paint, new flooring throughout, and new light fixtures/fans that enhance the natural light streaming through the many windows. Enjoy some fresh air on one of two peaceful and private balconies. The primary bedroom has a walk-in closet and ensuite, while the second bedroom and large laundry room add functionality. Take a stroll to Orchard Plaza, located just across the street. Here, you'll find everything from Save-On-Foods and Nature's Fare to restaurants, a Cineplex, JYSK, Winners, and more. This quiet, well-maintained building features heated underground parking and your own storage locker. With no pets allowed, no age restrictions, and vacant possession available, it's move-in ready! Don't miss this rare opportunity--schedule your private showing today and make Orchard Estates your new home! (id:6769)

Sadge Flor

eXp Realty (Kelowna)

Phone: (250) 864-0268



RE/MAX Kelowna
100-1553 Harvey Avenue
Kelowna, BC,
Canada

