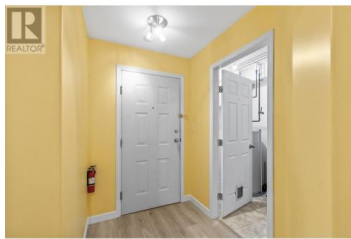




315 Whitman Road 102 Kelowna British Columbia

North Glenmore

\$449,900



Nestled in a prime location, Glen Park Meadows offers unparalleled convenience with easy access to shopping, dining, parks, and walking trails. This beautiful ground-floor condo, located on the south side of the building, is bathed in natural light, creating a bright and cheerful atmosphere. With new flooring throughout, this home is ready for you to move in and enjoy. The condo has a split bedroom design with the primary bedroom offering a 3-piece ensuite and a double closet, making it a comfortable retreat. The expansive living room w/ gas fireplace seamlessly flows into the dining area, providing an ideal space for relaxation and entertaining. The functional kitchen features a cozy breakfast nook, gleaming oak cabinets and a large picture window. Enjoy the convenience of a large laundry room, comparable to those found in single-family homes, making laundry days a breeze. Building Amenities: Gym - Stay fit and healthy with access to the building's gym, equipped with everything you need for a great workout + a meeting room for gatherings or social events. Living at Glen Park Meadows means enjoying a vibrant community with all the amenities you need right at your doorstep. Don't miss out on the opportunity to make this beautiful condo your new home. You are going to love living here!

(id:6769)

Lee Ivans

Royal LePage Kelowna

Phone: (250) 575-5455

<https://dionivansrealestate.ca/>



RE/MAX Kelowna
 100-1553 Harvey Avenue
 Kelowna, BC,
 Canada

