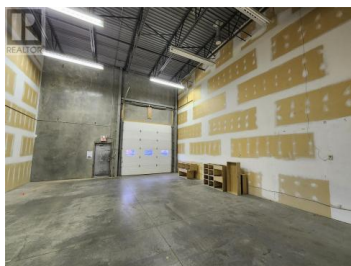
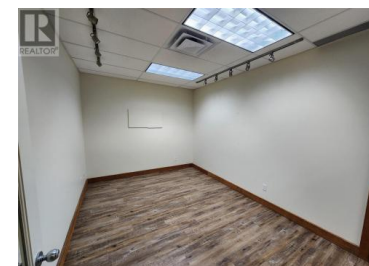




**450 Neave Court 102 Kelowna British Columbia**

Rutland North

**\$17**



Opportunity to lease approximately 3,016 sqft industrial strata unit at 450 Neave Court, just off Hwy 97. Unit 102 is fully built-out with both warehouse and office area between 2 floors. The warehouse consists of a 12 x 12' o/h door, 22' ceiling heights, 200 amp power with an industrial sink and washroom. The office area boasts a reception area, 5 private offices, large board room, open bull pen area, washroom, kitchenette and storage. Onsite parking and rear yard access available. The property is available immediately both for lease and for sale (MLS: \_\_\_\_\_). (id:6769)

**Jason Wills**

Venture Realty Corp.

Phone: (250) 300-5477

<http://www.venturecommercial.ca/>



**RE/MAX Kelowna**  
100-1553 Harvey Avenue  
Kelowna, BC,  
Canada