

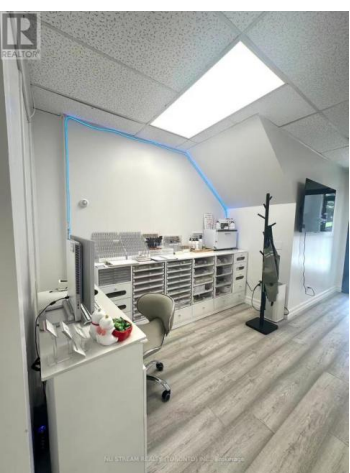
9011 Leslie Street 102 Richmond Hill Beaver Creek Business Park Ontario

Beaver Creek Business Park

\$79,800



NU STREAM REALTY (TORONTO) INC., Brokerage

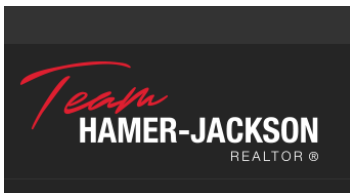


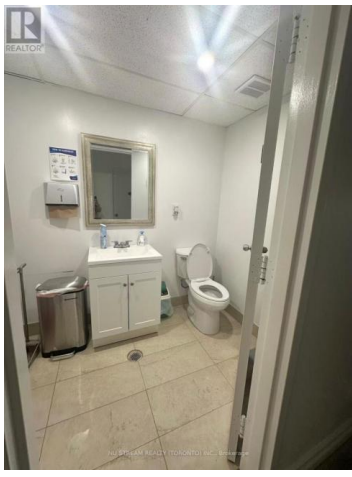
Great Opportunity For Owner-Operator Or New Entrepreneur To Take Over An Existing Nail Salon Business In A Prime Richmond Hill Commercial Area. Excellent Location Near Leslie & Hwy 7, Surrounded By Dense Residential Communities, Office Buildings, Retail Plazas, Restaurants, And High-Traffic Commercial Uses. Approx. 1,276 Sq.Ft. Well-Set-Up Nail Salon With Functional Layout, Featuring Two Open Service Areas And Two Separate Rooms. Attractive Lease Terms With Base Rent Approx. \$2,329.58/Month Plus TMI. Fixtures And Equipment Include Six All-In-One Manicure & Pedicure Spa Chairs With Massage Function, Three Manicure Tables, Nail Polish/Product Display Cabinets, And Reception Desk. Additional Monthly Income Of Approx. \$1,500 From A Portion Of The Premises Currently Used By Another Operator/Occupant. Buyer May Choose To Continue Or Terminate The Arrangement, Subject To Lease Terms And Landlord Approval Where Applicable. Buyer And Buyer's Agent To Verify All Financials, Rental Income, Lease Terms, Permitted Use, And Any Sublease/Occupancy Arrangement. (id:6769)

RONDA XU

NU STREAM REALTY (TORONTO) INC.

Phone: (647) 695-1188





RE/MAX Kelowna
100-1553 Harvey Avenue
Kelowna, BC,
Canada