



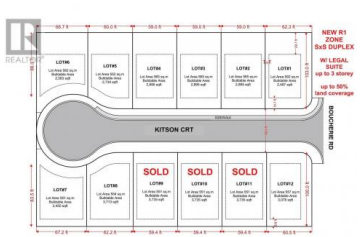
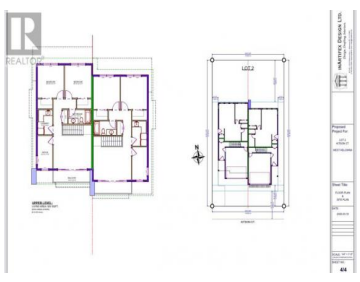
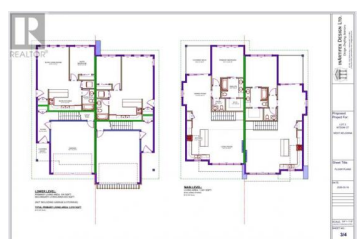
Proposed Project For:
 LOT 2
 KITSON CT
 WEST KELOWNA

1022 Kitson Court West Kelowna British Columbia
 Lakeview Heights
\$479,900

Concept proposal only



SCALE: 1/4" = 1'-0"
 (INCLUDES ARCHITECTURAL DETAILS)
 SHEET NO.:
1/4

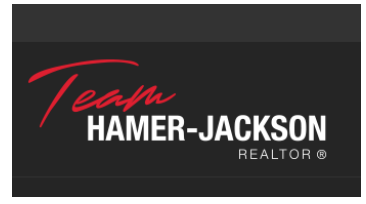


R1 zone lots for S x S duplexes with secondary suites has now been fully approved and adopted by the City of West Kelowna. Site coverage allowance of up to 50% and building up to 3 stories. Incredible opportunity to construct a S x S duplex or single-family home on these easy buildable lots offering wide frontages. This remarkable subdivision is located in the heart of Lakeview Heights, near many renowned wineries and wine trails. Just a quick 10-min drive from downtown Kelowna and close proximity to the beach, schools and shopping. No restriction on builders, Flexible building guideline and no time restriction allows you to customize and build at your own pace. The seller is open to the idea of extended completion and potentially starting construction prior to closing. Contact LR to further explore and discuss the specifics. The designs provided for lots 8,5,4,3 and 2 serves solely to illustrate potential construction options for the lots and have received preliminary approval by the developer. GST applicable. (id:6769)

Naze Khajavi

RE/MAX Kelowna

Phone: (250) 862-6770



RE/MAX Kelowna
 100-1553 Harvey Avenue
 Kelowna, BC,
 Canada