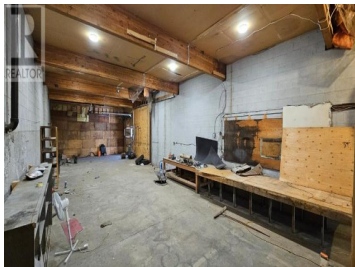
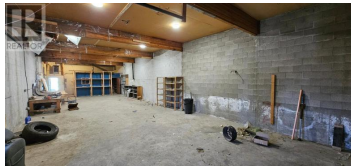
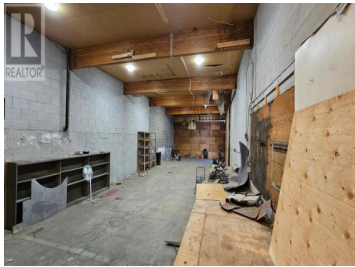




1324 CARMl Avenue 103 Penticton British Columbia

Industrial Area

\$2,500



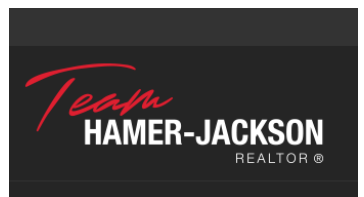
1760 sq. ft. warehouse / shops space. Flexible layout, two large bay doors in secure yard. Unit includes washroom, water available. Monthly rent plus utilities and applicable taxes. Measurements are considered approximate and should be verified if important. (id:6769)

Vijay Singla

eXp Realty (Penticton)

Phone: (250) 490-1530

<http://pentictonhome.com/>



RE/MAX Kelowna
100-1553 Harvey Avenue
Kelowna, BC,
Canada