

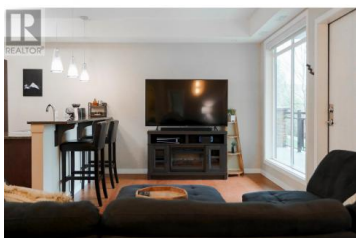
2011 Agassiz Road 103 Kelowna British Columbia

Springfield/Spall

\$439,000



LARGE GROUND FLOOR ENTRY CONDO - This large 1 bedroom executive condo is perfect for those looking for large windows, and tons of natural light. The ground level access is excellent for dog owners, offering direct access to green space right from your door. The open- concept layout and generous kitchen space provide a highly functional entertainment space with high end finishings. Not only is the interior spacious, there are two oversized patios that add significant square footage and exceptional outdoor living space rarely found in a 1 bedroom home. This unit is the perfect balance between functionality and high end finishes such as the granite countertops, stainless steel appliances and forced central air. You will also appreciate the additional storage locker and underground covered parking. Conveniently located close to everything, this home is priced to sell quickly! Don't miss out on this 1 bedroom Gem! (id:6769)



Lucas Colleaux

Royal LePage Kelowna

Phone: (250) 212-9709



RE/MAX Kelowna
100-1553 Harvey Avenue
Kelowna, BC,
Canada