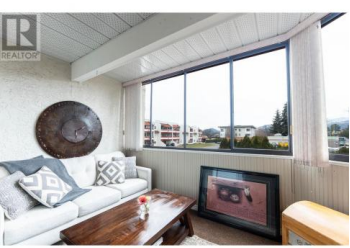
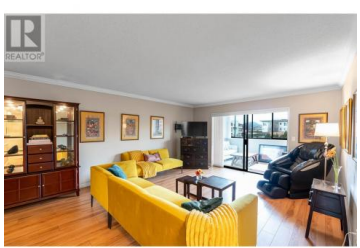
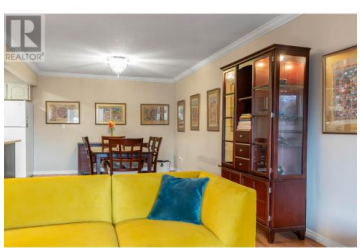


2110 Hoy Street 103 Kelowna British Columbia
 Springfield/Spall
\$334,900



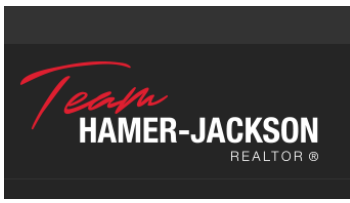
Move-In Ready! 2bed/2bath in a prime location. This unit stands-out within this price range as you just cant find over 1200 sqft of living space + 2 storage lockers, secure parking all within walking distance to groceries & ample amenities. The unit has been thoughtful updated with a beautiful walk in custom shower with seat, laminate flooring, crown moulding, fresh paint throughout & under cabinet lighting. Springfield Manor offers secure parking / secure entry, storage lockers plenty of visitor parking, community garden plus 2 rooms for parties or cards! Wonderful community of supportive neighbours. Book your private showing today! Age restriction 55+, no pets. (id:6769)

Derek Leippi

2 Percent Realty Interior Inc.

Phone: (250) 317-7881

<http://derekleippi.com/>



RE/MAX Kelowna
 100-1553 Harvey Avenue
 Kelowna, BC,
 Canada