

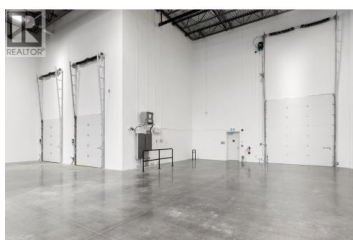
## 3440 Circuit Road 103 Kelowna British Columbia

University District

# \$15



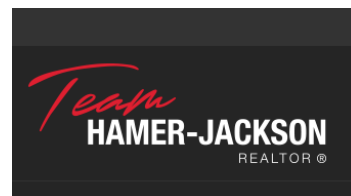
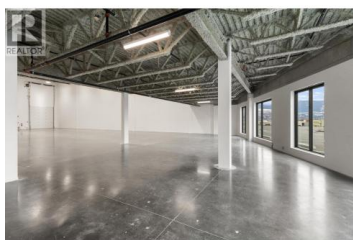
Large-format industrial unit available for lease featuring both grade and dock-level loading. The property offers 10,123 square feet, including 8,050 square feet of open warehouse space and 2,073 square feet of mezzanine. The unit is equipped with one 12' x 14' grade-level overhead door and two 8'6" x 10' dock-level loading doors, providing excellent functionality for a variety of industrial users. Additional features include 28' clear ceiling height, 200 amp / 600 volt power, and an ESFR sprinkler system. 15 designated parking stalls are included. Zoned I2, allowing for a wide range of industrial uses. Available immediately. (id:6769)



**Stewart Dunbar**

Coldwell Banker Horizon Realty

Phone: (250) 718-8775



**RE/MAX Kelowna**  
100-1553 Harvey Avenue  
Kelowna, BC,  
Canada