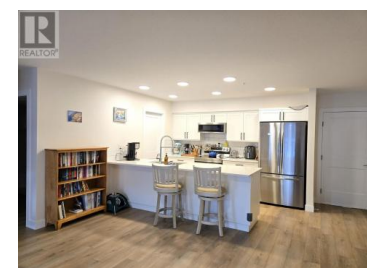




4278 22ND Avenue 103 Prince George British Columbia
\$425,000

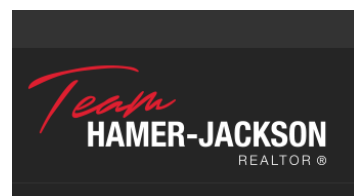


This rear-facing, ground-level corner unit has a great layout with a generous bedroom and full bathroom on each side of the central living room. As you enter, you will find the beautiful bright kitchen with adjacent large pantry featuring a large quartz island with seating and open to the living room and dining area making it perfect for entertaining company. The primary bedroom with a large walkthrough closet leads to a 4-piece ensuite. Other attractive features are the large covered balcony, convenient in-suite laundry, vinyl plank flooring throughout as well as all newer appliances. This unit also includes one underground parking space. All of this conveniently located close to shopping amenities, UNBC and walking trails. (id:6769)

Kerstin Aspa

Royal LePage Aspire Realty

Phone: (250) 692-0492



RE/MAX Kelowna
 100-1553 Harvey Avenue
 Kelowna, BC,
 Canada