



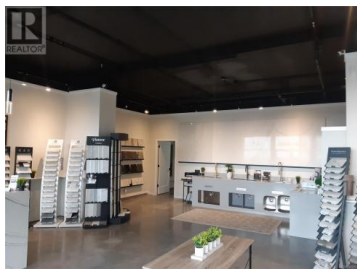
679 Terminal Avenue 103 Nanaimo British Columbia

Departure Bay

\$439,500



Constructed in 2014 this high visibility first class commercial strata unit is offered for sale in central Nanaimo with an existing Tenant. The 1,261 square foot ground floor commercial strata unit is part of a 6 unit mixed use building. Easy access, ample parking and a large pylon sign make this a premier location. Other commercial strata tenants include Xpose Salon and Lounge and Kids Kompany Small Fries. Additional information available on completion of a Confidentiality Agreement (id:6769)

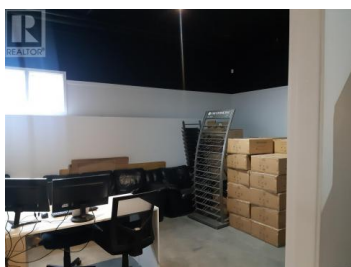
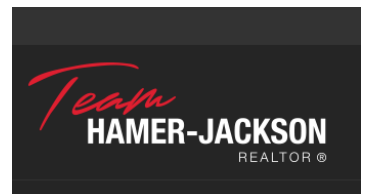


John Hankins

NAI Commercial Central Vancouver Island Ltd.

Phone: (250) 713-9830

<http://naivanisle.ca/>





RE/MAX Kelowna
100-1553 Harvey Avenue
Kelowna, BC,
Canada