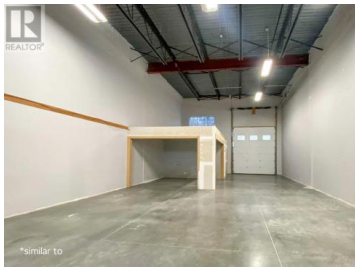
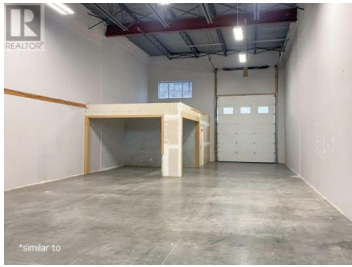


210 Lougheed Road 104 Kelowna British Columbia

North Glenmore

\$18



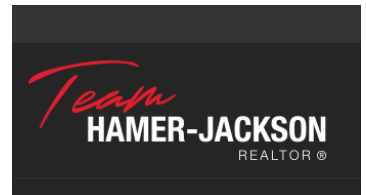
2,400 SF in-line industrial strata unit available for sublease in the North Glenmore Industrial Park on Lougheed Road. Open warehouse space with 12'x14' overhead door, 20' clear ceiling height, 3 phase 200-amp service and washroom with change room. Unit comes with 4 dedicated parking stalls, 3 of which are in front of the unit. Easy and convenient access to and from Highway 97, minutes to UBCO, Kelowna International Airport and Highway 33. Sublease expires May 31, 2027, with potential to extend. (id:6769)

Kris McLaughlin

RE/MAX Kelowna

Phone: (250) 870-2165

<https://www.commercialbc.com/>



RE/MAX Kelowna
100-1553 Harvey Avenue
Kelowna, BC,
Canada