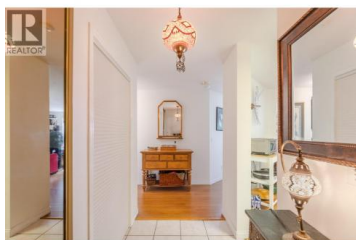


8404 Jubilee Road 104 Summerland British Columbia

Main Town

\$460,000



Welcome to one of the most desirable floor plans in the sought-after Silver Birch community! This ground-floor corner unit in Phase 1 offers 2 spacious bedrooms, a den, and a large, enclosed sunroom with sliding glass doors that open to the beautifully landscaped grounds - perfect for year-round enjoyment. Located on the south side of the building, bright and airy unit features an open-concept layout, generous storage throughout, and additional storage just steps down the hall. Thoughtfully maintained with tasteful updates, it provides a warm, move-in-ready space. Silver Birch is known for its well-run strata, lush landscaping, and exceptional amenities including: secure underground parking, workshop, RV parking, recreation hall for family gatherings, outdoor swimming pool with change rooms. The strata fee includes natural gas and hot water. Age 55+ community, non-smoking building, and small pets allowed with approval. Just a short walk to downtown Summerland, this is a rare opportunity to own in a truly unique and well-cared-for home. (id:6769)

Shelley Parker

Parker Real Estate

Phone: (250) 460-2855

<http://parkerproperty.ca/>



RE/MAX Kelowna
100-1553 Harvey Avenue
Kelowna, BC,
Canada