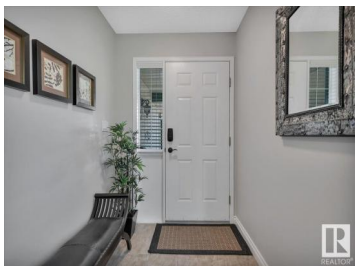




Edmonton Alberta

Carter Crest

\$449,900



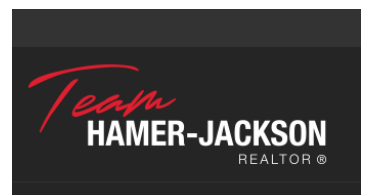
Welcome to the Palisade at Whitemud, a very well maintained adult complex with attractive landscaping consisting of 36 half duplex bungalows & split levels. Prestigious location just steps to park, ravine, transit & shopping. New asphalt shingles throughout the complex (2024/25). Spacious home with high vaulted ceilings, capuccino stained birch hardwood floors in living/dining room & kitchen. Oversize windows & gas fireplace in LR, well planned oak kitchen, S/S appliances, breakfast nook with door opening onto the private deck which overlooks beautiful mature trees & the neighbours' big yard. Two bedrooms & two full bathrooms on the upper level. The primary bedroom has a walk-in closet & a 5 pce ensuite. Large tiled entry & huge laundry/sewing/mud room with direct access to the garage. Fully finished lower level with family room with gas fireplace, bedroom & a third full bath which is ideal for out of town guests. Lots of storage space! Move in & enjoy an easy lifestyle in this well run complex. (id:6769)

Ann Dawrant

RE/MAX Elite

Phone: (780) 940-6485

<http://www.anndawrant.com/>



RE/MAX Kelowna
100-1553 Harvey Avenue
Kelowna, BC,
Canada