

2205 Louie Drive 105 West Kelowna British Columbia

Westbank Centre

\$24



Position your business for success in this bright and attractive 450 sqft commercial space, ideally situated next to the highway. This location offers easy access to a variety of amenities, making it an ideal spot for commercial purposes. Surrounding facilities include major retailers like Walmart, London Drugs, Staples, and Real Canadian Superstore, all within close proximity. Nearby are several other amenities such as a Husky gas station and various dining and shopping options, providing added convenience for potential occupants or customers. (id:6769)

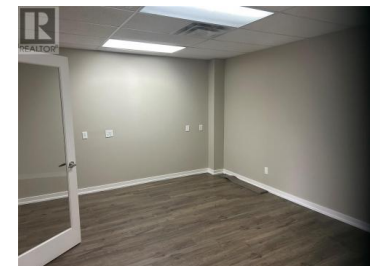
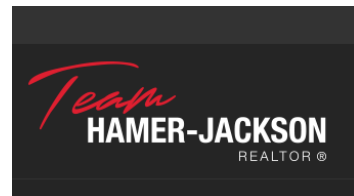


Bill Raine

Coldwell Banker Horizon Realty

Phone: (250) 870-6210

<http://www.rainegroup.ca/>



RE/MAX Kelowna
100-1553 Harvey Avenue
Kelowna, BC,
Canada