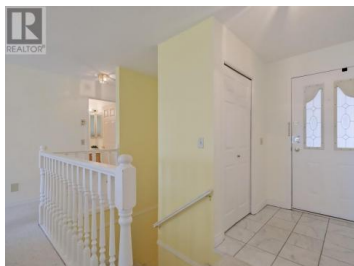
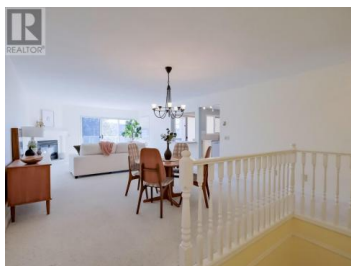
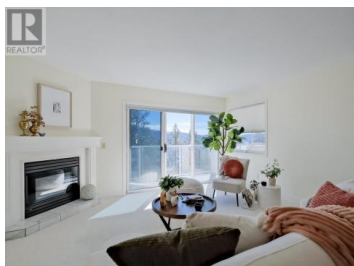




4450 Ponderosa Drive 105 Peachland British Columbia

Peachland

\$599,000



Welcome to Chateaux on the Green! Nestled at the top of Ponderosa Drive, this inviting rancher walkout townhome boasts breathtaking views of Lake Okanagan. Offering 2,500 sq ft of living space, the home features a thoughtfully laid-out floor plan with three spacious bedrooms and three bathrooms. The bright, open kitchen seamlessly flows into the living room, which opens onto a covered patio ideal for entertaining. The main floor is heated by natural gas radiant hot water, while the lower level is equipped with radiant baseboard heating for added comfort. Additional perks include a lower-level storage room, a covered parking stall, and a separate storage room, perfect for your golf clubs, with a newly approved 9-hole golf course right across the street. This exceptional home is a true must-see! (id:6769)

Darcy Elder

Chamberlain Property Group

Phone: (250) 869-2345

<http://darcyelder.com/>



RE/MAX Kelowna
100-1553 Harvey Avenue
Kelowna, BC,
Canada