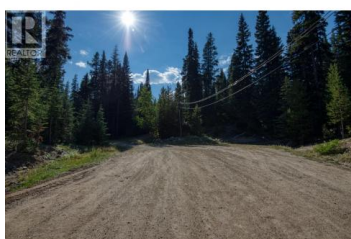


105 Cahill Place Apex Mountain British Columbia

Penticton Apex

\$329,900



Discover an extraordinary opportunity to build your dream mountain escape! For the first time since 1989, the last remaining undeveloped lot on Cahill Place at Apex Resort is available for sale. This exceptional 0.265-acre (11,543 square feet) parcel is a blank canvas, offering a rare chance to design and build a custom ski cabin retreat perfectly tailored to your family's needs. Nestled among towering trees, this lot provides a tranquil and private setting while keeping you close to the action. You're just a short, scenic walk to the Strayhorse Trail, granting you immediate access to exhilarating downhill skiing and snowboarding. For those who prefer a more serene experience, a quick and beautiful drive leads you to the renowned Nickel Plate Nordic Center, home to some of the best cross-country skiing trails in the region. Zoned RS4 for single-family residences, this property is a truly unique find. Imagine waking up to fresh mountain air, spending your days on the slopes, and returning to the warmth and comfort of a home you designed yourself. This isn't just a lot; it's the foundation for a lifetime of cherished memories. Don't miss out on this unparalleled opportunity to secure your place in the heart of Apex Resort. Call today and start planning your ultimate mountain sanctuary! (id:6769)

Paul Basso

Royal LePage Locations West

Phone: (250) 462-0558

<http://www.paulbasso.com/>



RE/MAX Kelowna
100-1553 Harvey Avenue
Kelowna, BC,
Canada

