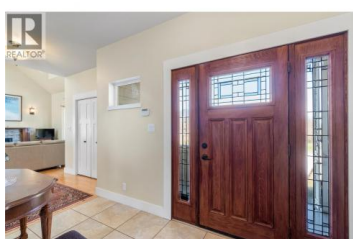




1050 9 Avenue Salmon Arm British Columbia

NE Salmon Arm

\$997,000



CUSTOM BUILT LAKEVIEW HOME....Craftsman-style two-story home with a full basement is ideally located in Salmon Arm's sought-after hospital area. From the moment you step into the spacious foyer, the quality craftsmanship is immediately evident. The main level features soaring ceilings in the living and dining areas, a natural gas fireplace, hardwood floors, and thoughtfully placed windows that maximize natural light. The kitchen is sure to impress, with an expansive peninsula counter, granite countertops, an eating bar, a prep sink, and a gas stove. Conveniently located just off the kitchen is the laundry area, along with a bright and inviting mudroom that provides access to the covered deck, garage, and sauna that has an infrared heater. The primary bedroom offers a walk-in closet and a well-appointed ensuite complete with a soaker jet tub, separate shower, heated floors, linen storage, and direct access to the sauna. A powder room for guests completes the main level. The 2nd story has a spacious landing used as an office, 2 large bedrooms, full bath, storage and a covered south facing deck. The full basement contains a non-conforming 1000 sq. ft. one-bedroom suite with separate access and its own laundry, offering great flexibility. Mature landscaping and garden beds enhance the outdoor space, while the home's location at the end of a cul-de-sac offers quiet enjoyment and ...



RE/MAX Kelowna
100-1553 Harvey Avenue
Kelowna, BC,
Canada

Rochelle Dale

RE/MAX Shuswap Realty

Phone: (250) 804-9327

<http://www.rochelledale.com/>

