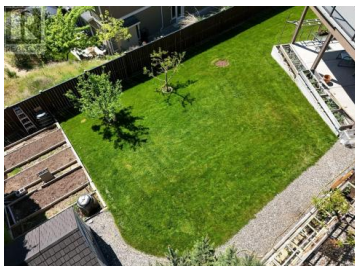




1065 Waldie Court Kelowna British Columbia

Glenmore

\$1,400,000



Tucked Quietly on one of Glenmore's most Coveted Crescents, 1065 Waldie Court offers over 3,800 square feet of Warm, Graceful living--crafted for Families who believe that Home is where Legacy begins. This Elegant rancher walkout features 7 bedrooms + 6 bathrooms, including a bright 1-Bed Legal Suite with its own entrance + laundry--ideal for extended family or guests. A Third Suite Potential Downstairs given the other Two Bedrooms, Entrance and Living Space GARAGE: Ample Seasonal Storage, Vehicle + Toy Storage for Hobby enthusiasts. MAIN FLOOR: Flows effortlessly with both a family room + formal living room, anchored by a walnut-finished kitchen with quartz countertops. VIEW: Step onto the recently resurfaced, view-facing Deck + take in the Peaceful Valley surroundings. DOWNSTAIRS: Covered patio walks out to a lush, private 0.25-acre yard. BACKYARD: A living Tapestry--peach tree (400+ fruit/year), Italian plum, kiwi, black+green grapes, raspberries, blackberries, blueberries + strawberries. Concrete paths on both sides, garden beds, irrigation systems, lush lawn, fenced yard, RV parking + boat stalls all add to the home's rare versatility. Located in a Quiet, Family-Friendly Enclave, this is more than just a Home--it's a Legacy waiting to be lived. (id:6769)

Clifford May

Realty One Real Estate Ltd

Phone: (250) 258-4343

<http://www.calendly.com/cliffordmay>

y-



RE/MAX Kelowna
100-1553 Harvey Avenue
Kelowna, BC,
Canada

