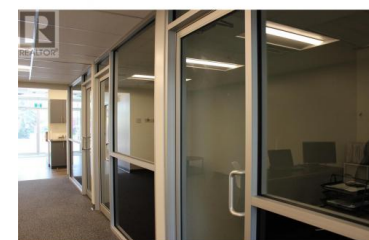
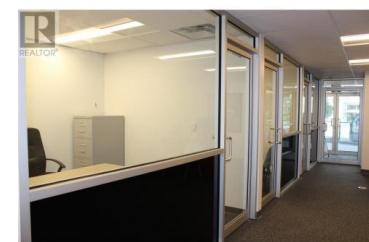
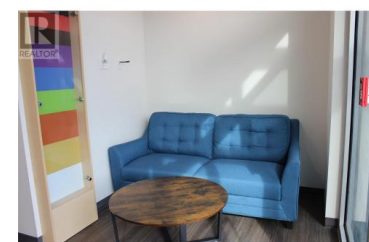


**1925 Enterprise Way 107 Kelowna British Columbia**

Dilworth Mountain

**\$850**



Position your business for success in this well-appointed office space located on one of Kelowna's busiest thoroughfares. This highly visible location offers excellent signage potential and a steady flow of foot and vehicle traffic, ideal for businesses seeking both exposure and convenience. The space includes up to four private offices, some featuring large windows and abundant natural light, creating a bright and productive work environment. Additional features include inviting co-working areas, a shared kitchen, and two modern bathrooms. A dedicated receptionist is on-site during working hours to greet clients and support daily operations. Flexible leasing options are available to suit your business needs whether you're interested in leasing one office, multiple offices, or configuring a separate unit formation for enhanced privacy and independence. Multiple layout options available. Please inquire for details. (id:6769)

**Geet Hans**

Royal LePage Kelowna

Phone: (250) 575-0436



**RE/MAX Kelowna**  
100-1553 Harvey Avenue  
Kelowna, BC,  
Canada