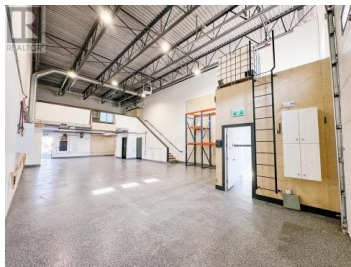




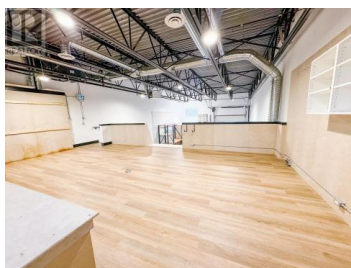
310 Hiram Walker Court 107 Kelowna British Columbia

Ellison

\$15



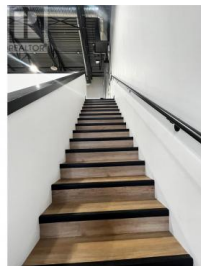
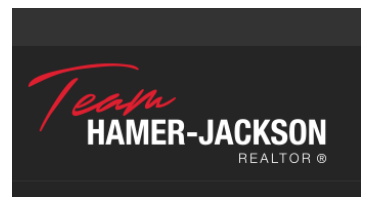
Newer Concrete Industrial Unit in the Jim Bailey Road area of Kelowna. This unit is 1,950sf on the main, PLUS 600sf mezzanine for a total of 2,550sf. I-2 zoning allows multiple uses. End Unit with signage opportunities. 12x 14 Overhead Door, handicap washroom, office area, finished mezzanine plus three parking stalls. (id:6769)



Stefani Lea

Royal LePage Kelowna

Phone: (250) 870-0730



RE/MAX Kelowna
100-1553 Harvey Avenue
Kelowna, BC,
Canada