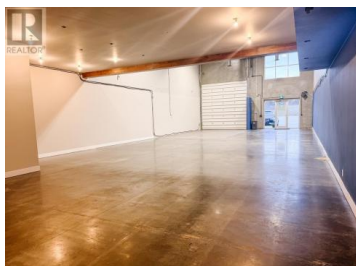


716 Adams Court 107 Kelowna British Columbia

University District

\$16



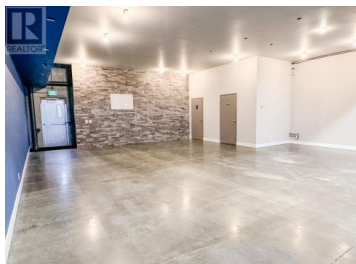
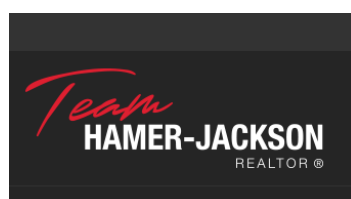
Purchase or Lease this Concrete Industrial Strata Unit with highway exposure centrally located. Unit includes high end finishing with a mezzanine open to below, handicap washroom, kitchen area and high ceilings with ample natural light. I-2 zoning allows for many uses. 14x14 overhead door. (id:6769)



Stefani Lea

Royal LePage Kelowna

Phone: (250) 870-0730



RE/MAX Kelowna
100-1553 Harvey Avenue
Kelowna, BC,
Canada