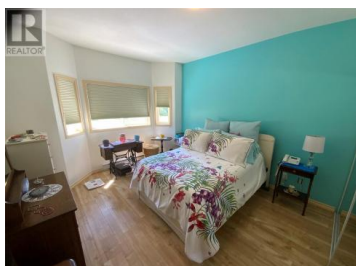
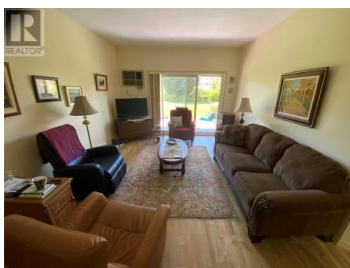




8905 Pineo Court 107 Summerland British Columbia

Main Town

\$358,500



Welcome to popular Linden Estates! This ground floor, two bedroom, two bathroom home is in move-in ready condition. It offers a spacious open plan with large rooms. Enjoy the beautiful views of Giant's Head Mountain from the large open deck off the living room with access onto the generous size yard. This home offers in-suite washer and dryer and a large storage room has extra built in shelving. The large master bedroom features a 3 piece ensuite bathroom and a large closet. Professionally installed new flooring and painting throughout. Comes complete with covered parking for 1 vehicle with extra on-site RV parking and a large 9x6 storage unit. Conveniently located within walking distance to all Summerland Main town amenities! Don't miss this opportunity to live in one of the best complexes in Summerland. Sorry no Pets! 55 Plus building. (id:6769)

Brad Schedel

2 Percent Realty Interior Inc.

Phone: (250) 488-2102



RE/MAX Kelowna
100-1553 Harvey Avenue
Kelowna, BC,
Canada