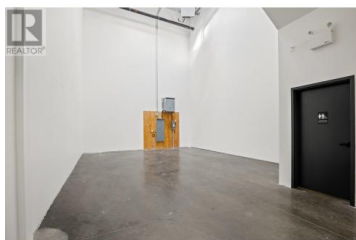
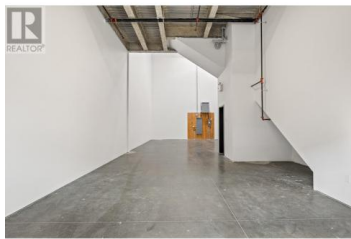
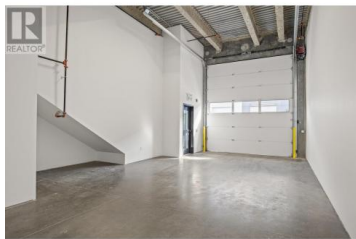


## 9670 McCarthy Road 107 Kelowna British Columbia

Lake Country South West

# \$641,080



Introducing IntraUrban McCarthy, a collection of 37 premium quality strata industrial spaces, specifically designed for the next generation of small and medium-sized businesses. This presents a unique opportunity to acquire sought after industrial real estate in Kelowna, BC, with highly flexible floor plans, modern design, and a full range of premium-quality features. The location is close to highway 97 and other major businesses and amenities, making this an excellent opportunity to acquire a valuable industrial property in the growing Kelowna North industrial park. (id:6769)

### Steve Laursen

Royal LePage Kelowna

Phone: (250) 808-8101

<http://www.stevelaursen.com/>



RE/MAX Kelowna  
100-1553 Harvey Avenue  
Kelowna, BC,  
Canada