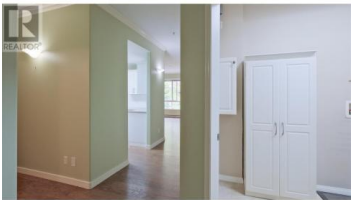
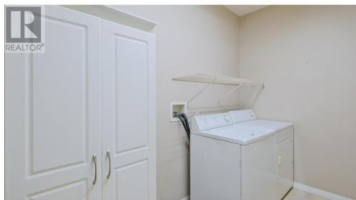




1962 Enterprise Way 108 Kelowna British Columbia
 Dilworth Mountain
\$499,900



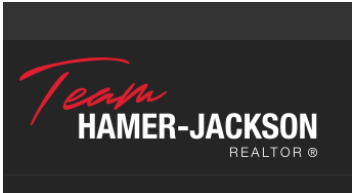
BIG & BRIGHT CORNER UNIT! This highly sought after layout at Meadowbrook Estates is one of the largest 2 bedroom floorplans in the development. Featuring its own private entrance through a ground-floor patio and 9 foot ceilings with crown moldings. Enjoy your morning coffee in the sunshine on the covered east-facing patio. This corner unit boasts large windows that flood the home with natural light. This home also includes a cozy gas fireplace and gas BBQ outlet. Plus your gas costs are included in the strata fees. A generous laundry room with ample storage space is an added bonus, along with a separate storage unit just steps down the hall. Meadowbrook is sought after for its resort feel. Whether lounging poolside in the sunshine or having some laughs over a game of pool with friends in the newly remodeled clubhouse, it is a perfect place to call home. Amongst the amenities are 3 guests suites with low nightly rates. Meadowbrook is very centrally located, just a stone's throw away from transit, shopping, recreation, and the rail trail. (id:6769)

Kyle Cave

Royal LePage Kelowna

Phone: (250) 215-6464

<http://kylecave.com/>



RE/MAX Kelowna
 100-1553 Harvey Avenue
 Kelowna, BC,
 Canada